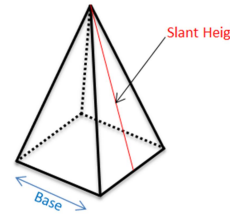


# Surface Area of Square Pyramids

How many faces do square pyramids have?

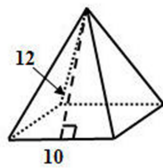
What shapes are the faces?

Which area formulas are needed?

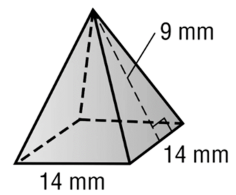


Note: It is important that the **slant height** is used for the area of the triangle, *not* the height of the figure.

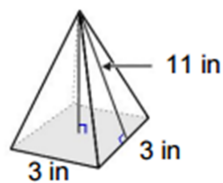
Calculate the surface area of the square pyramid



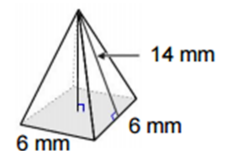
Calculate the surface area of the square pyramid.



Calculate the surface area of the square pyramid.

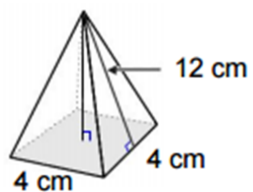


Calculate the surface area of the square pyramid.

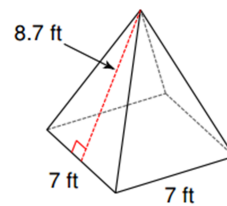


## Notes - Surface Area of Square Pyramids.notebook

Calculate the surface area of the square pyramid.



Calculate the surface area of the square pyramid.



Can you come up with a formula for the Surface Area of a Square Pyramid?

1 square base = \_\_\_\_\_

4 congruent triangles = \_\_\_\_\_

Surface Area = \_\_\_\_\_ + \_\_\_\_\_